



DELAWARE FOREST SERVICE URBAN AND COMMUNITY FORESTRY PROGRAM



2025 INFLATION REDUCTION ACT (IRA) GRANT REQUIREMENTS Municipalities, Homeowners Associations, Communities, Non-Profit Organizations

This grant opportunity is made possible through funding from the Inflation Reduction Act and the U.S. Department of Agriculture, Forest Service Urban and Community Forestry Program.

I. GRANT PROGRAM OBJECTIVES

- Increase urban tree canopy in Delaware by promoting quality tree related projects in disadvantaged communities as indicated on page 4.
- To maintain and improve urban and community forest health.
- To increase the number of urban forestry professionals.
- To improve Urban and Community Forest management, maintenance, and stewardship.
- To promote diversity, equity, leadership in engaging and increasing workforce diversity.

The Urban and Community Forestry Program authorizes funding for a broad range of eligible activities such as:

- Tree planting, site preparation, and management**
- Tree pruning and hazard tree removal**
- Tree inventory, management plan, and implementation**
- Urban forestry training and workforce development**
- Community-based outreach, education, and greening**
- Urban wood utilization**
- Urban food forests**
- Tree related extreme heat mitigation strategies**

II. ELIGIBLE PROJECTS

- Development of a urban forest management plan based on a professional tree inventory and implementation of at least one priority that is identified from the newly developed plan.
- Tree pruning and hazardous tree removal (1:1 tree replacement is required at a nearby appropriate site). Hazard trees must be rated as “extreme” or “high” risk of failure as documented by a Tree Risk Assessment Qualified professional.
- Tree planting (e.g. urban forest buffers, street and park trees, open space plantings, private lands, food forests) Including site preparation and tree maintenance.
- Partner with Title 1 Schools, Colleges/Universities, and Low Security Prisons for activities such as:
 - develop and implement a career track curriculum focused on urban forestry and the tree care industry.
 - offer introduction to Urban Forestry and Forestry Courses
 - create management plans and implementation activities for the outdoor teaching areas.
 - training and certification in tree care industry
- Tree related community engagement and education

III. GRANT RULES

APPLICANT AND LOCATION

1. Eligible projects must take place within the geographical areas located on the map on page 4. Please use the [interactive tool](#) to determine eligible areas. Note: the map below includes some additional eligible areas. If you are uncertain if your community is eligible, please contact us.
2. Tree planting and management projects on public lands are preferred but priority private lands are also eligible.
 - Public lands are lands owned by state, county, or local governments along with lands classified as public open space within Homeowners Associations (HOA's), Maintenance Corporations (MC's), etc. Public lands include parks, green-ways, schools, recreation areas, and public rights-of-way or easements.
 - If the project takes place on private lands, then:
 - The community and homeowner must enter into an agreement with DFS to track survival by audit over time.
 - Landowners must give permission/access for work on their property and must commit to maintaining the tree.
 - Landowners will be provided with resources and educational outreach by DFS on proper tree care and management.
3. Applicants **must** have an Employer Identification Number (EIN) – no payment will be made to individuals.
4. All applications **must** be submitted **online**.
 - Applications will open September 30, 2024.
 - Deadline to submit application online is December 31, 2024 by 4:30 p.m.
5. The urban and community forestry grant is a reimbursement grant. No project can take place ahead of application approval. Reimbursement may occur throughout the project as activities are being completed. Reimbursement basis will be determined by project type and length of project.

APPLICATION PROCESS

1. Please use the application form located on our website at de.gov/delawaretrees to provide a Scope of Work including timeline of activities and a detailed budget sheet supplied by DFS.
2. Use the [EPA interactive tool](#) to create a map screenshot indicating project location. Please zoom to location, increase transparency, and mark project boundary on screenshot.
3. If approved for the grant, you will be asked to provide cost estimates for tree inventory, tree planting, tree pruning and hazardous tree removal projects. At that time, please provide three original bids on contractor's company letterhead for the grant project showing the itemized costs of materials and/or services for the project being applied for.
4. Grant requests must not exceed **\$50,000.00**
5. Projects may take up to 2 years to complete.

Important Notes:

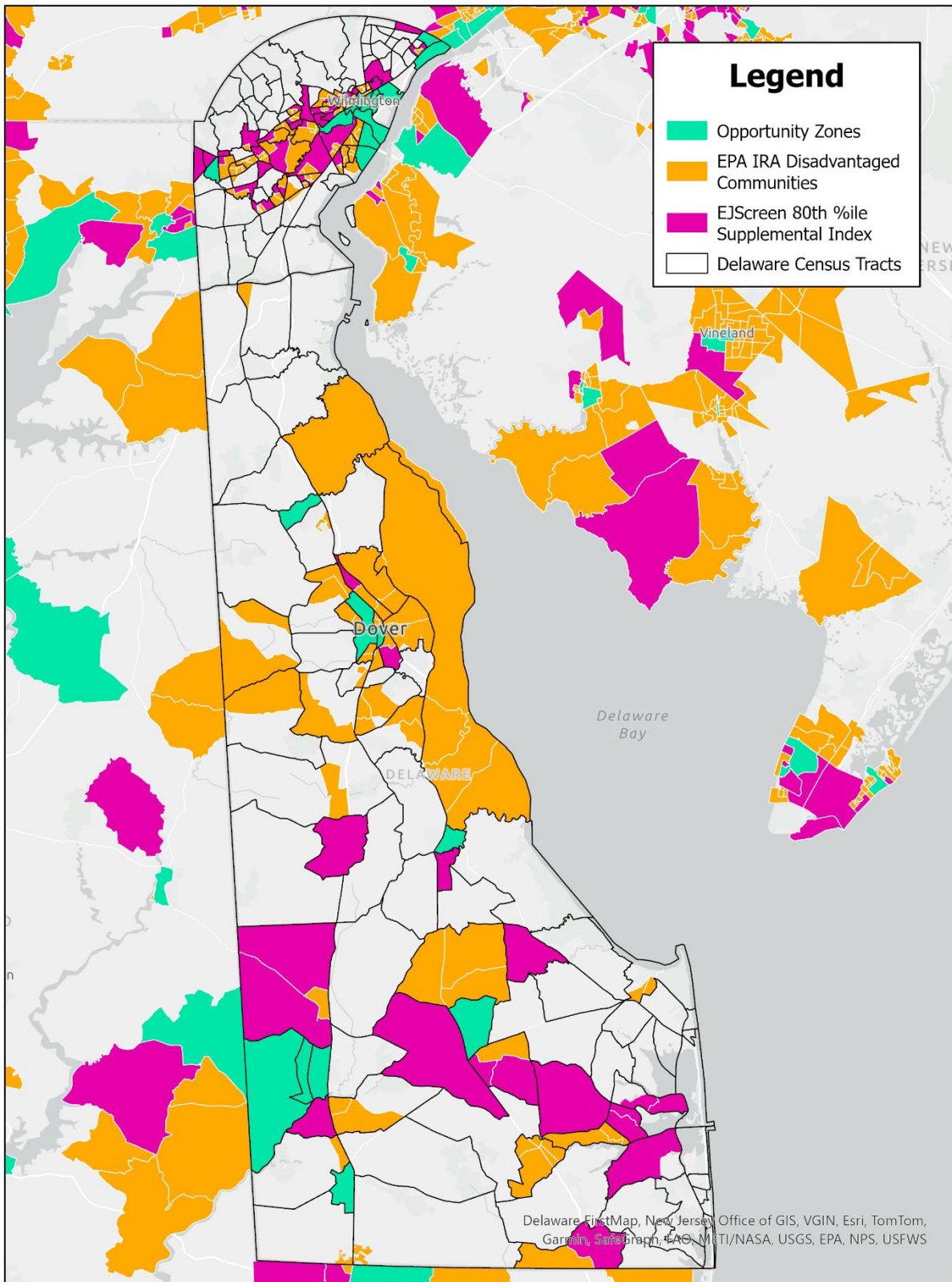
- No materials or work may be purchased or performed until the Grantee signs a contract with the Delaware Forest Service. The contract will be provided after the grant is awarded.
- This is a reimbursement grant. Reimburse may occur throughout the project as activities are being completed. Reimbursement basis will be determined by project type and length of project as outlined in fully executed contract. The Grantee provides proof of paid invoices.
- 100 percent of work must take place in, or benefit, disadvantaged communities and, therefore, match is waived. This match waiver must be passed on to any sub-awardees.

IV. RECIPIENTS OF GRANT FUNDS

- Will receive a grant status letter and procedural guidelines by January 28, 2025.
- Will sign a contract with the Delaware Forest Service, stipulating that the project will be conducted as specified in the grant application along with any amendments. **No materials or work may be purchased or performed without a signed contract with the Delaware Forest Service.**
- Will be required to submit an updated Online W9 Form to allow your organization to receive grant funds from the State of Delaware. <https://esupplier.erp.delaware.gov> before signing the contract. **Verification must be received by DFS 14 days after receiving the award letter.**
- Press releases, articles, newsletters, signage, etc. must contain the following wording: “Funding provided by the Inflation Reduction Act and U.S. Department of Agriculture, Forest Service, Urban & Community Forestry Program and Delaware Forest Service.”
- Failure to use the above statement will result in reallocation of funding and/or repayment of issued funds.
- Will provide monthly/quarterly updates depending on length of the project.

Any questions regarding the 2025 grant applications process should be directed to:

Taryn Davidson
Urban Coordinator
Delaware Forest Service
Taryn.Davidson@delaware.gov



“The towns of Marydel and Delmar are included as eligible because both straddle the border between Delaware and Maryland. In both cases, the towns on the Maryland side are identified as disadvantaged through the approved tools of CEJST, for Marydel, and the EPA IRA map, for Delmar.”